

← 10 INCHES

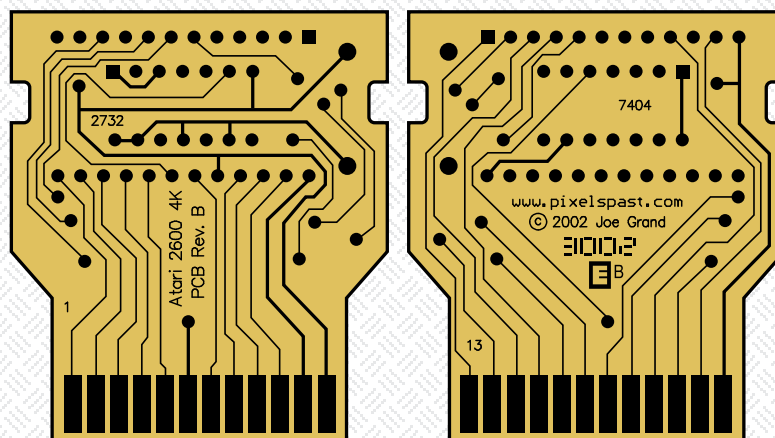
← 5 INCHES

**NOTES:**

Lined area for notes.

ATARI 2600 2K/4K PCB FRONT

ATARI 2600 2K/4K PCB BACK



**DISCLAIMER:**

Pixels Past does not assume any liability arising out of the application or use of any product or circuit described herein. Pixels Past guarantees that the printed circuit boards are electrically tested and meet physical design and manufacturing requirements. Pixels Past warrants to replace any unmodified circuit board proven to be flawed. Pixels Past is not responsible for improper use or placement of components, incorrect soldering techniques, damage to systems, or other assembly or electronics issues. Pixels Past reserves the right to make changes without further notice to any products herein to improve reliability, function, or design.

AtariAge is the exclusive distributor of Pixels Past's PCBs and other homebrew supply products. Please contact AtariAge support (support@atariage.com) for technical assistance and customer service issues.

© 2003 Pixels Past (pixelpast.com), a division of Grand Idea Studio, Inc. (grandideastudio.com). Manual layout and artwork by Dale Crum, AtariCart (atariart.com) Manual printed and distributed by AtariAge (atariage.com). DS REV 1.0



# 2600

PIXELS PAST ATARIAGE 2K/4K PCB ASSEMBLY

**FEATURES:**

- Supports 2K and 4K game ROMs
- Uses easily available, off-the-shelf components
- Fits into standard Atari® 2600™ cartridge cases
- Build new 2600 games without modifying old cartridge circuits

**DESCRIPTION:**

Pixels Past's Atari 2600 2K/4K PCB (Printed Circuit Board) provides homebrew game authors with an easy method of creating their own videogame cartridges. The PCB, which fits in standard Atari 2600 cartridge cases and works on any Atari 2600 or compatible system, supports any 2KB or 4KB Atari game binary.

The required components are low-cost and available at practically any electronics store and the PCB is easily assembled by anyone with basic soldering skills. The Atari 2600 2K/4K PCB is designed for game developers who do not want to go through the hassle of modifying old cartridge circuit boards. These are brand new boards from Pixels Past (www.pixelpast.com), not recycled boards from old games.

If you'd prefer not to solder the boards yourself, AtariAge (www.atariage.com) provides homebrew services to build and assemble game cartridges. They can also design and produce full-color manuals and labels.

← 10 INCHES

← 5 INCHES

